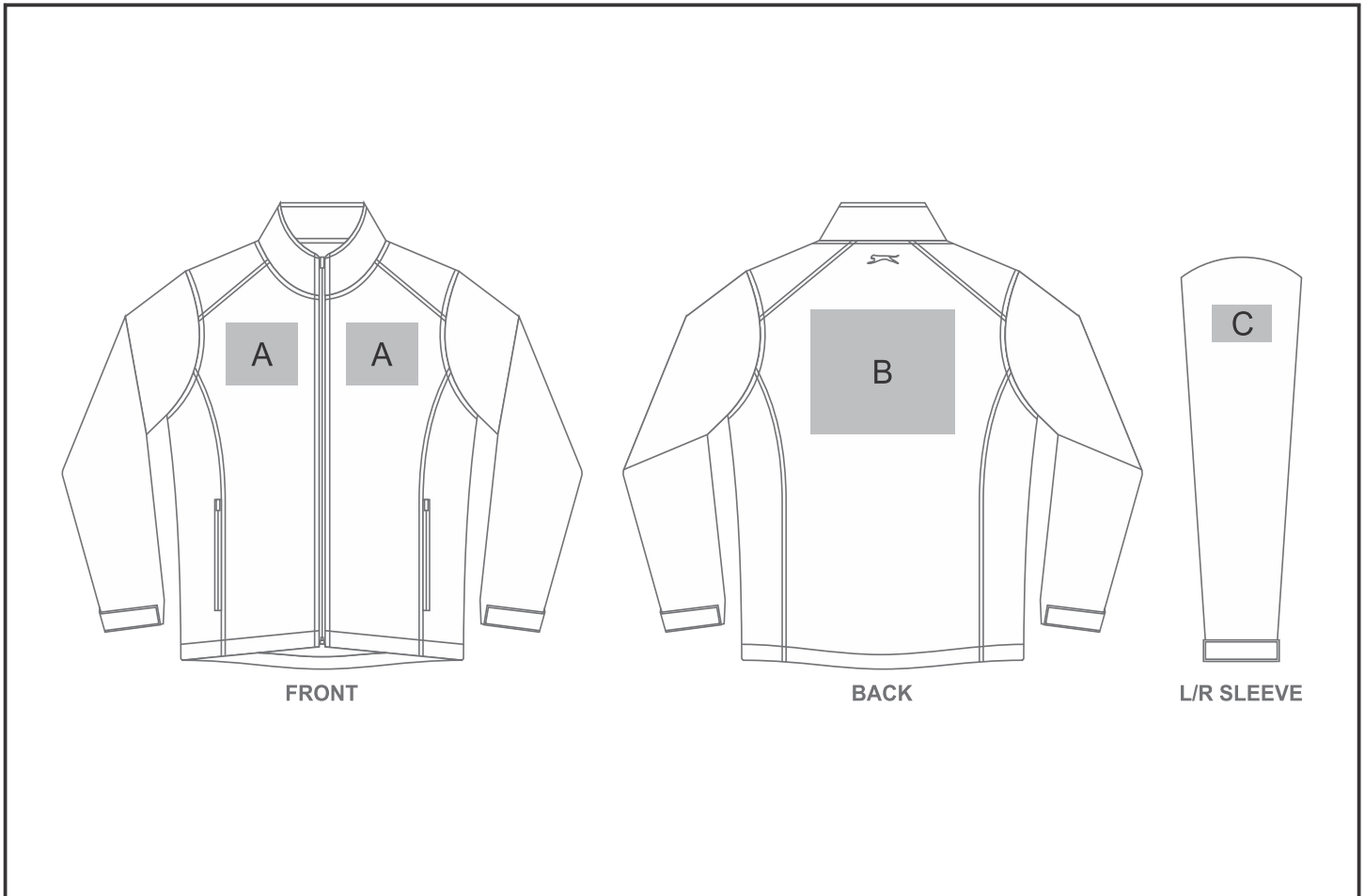


# JC-SL-111-A

Mens Nagano Softshell Jacket



## Need to know:

Includes 1-Colour, 1-Position Screen Print OR 1-Position Embroidery (setup fees apply)

- **EMB Inclusive Parameters:** Left/Right Chest or Back = 100mm x 100mm
- Laser/Deboss Colour: Tonal
- No Laser on White, Black & Navy Garments

## Branding Options:

| Position | Branding Method (Branding Code)       | No. of Colours | Dimension               |
|----------|---------------------------------------|----------------|-------------------------|
| A        | Screen Print (SB)                     | 1 Colour       | 100mm wide x 60mm high  |
| A        | Embroidery (EM-CLOTHING)              | N/A            | 120mm wide x 80mm high  |
| A        | Laser Engraving (LG)                  | N/A            | 100mm wide x 80mm high  |
| A        | Debossing Clothing (BOS-C)            | N/A            | 100mm wide x 60mm high  |
| A        | Digital Transfer Clothing A6 (DTC-A6) | Full Colour    | 100mm wide x 100mm high |
| A        | Silicone (STP-A)                      | N/A            | 30mm wide x 30mm high   |
| A        | Silicone (STP-B)                      | N/A            | 50mm wide x 50mm high   |

|   |                  |     |                        |
|---|------------------|-----|------------------------|
| A | Silicone (STP-C) | N/A | 80mm wide x 80mm high  |
| A | Silicone (STP-D) | N/A | 100mm wide x 40mm high |

|   |                                       |             |                         |
|---|---------------------------------------|-------------|-------------------------|
| B | Screen Print (SB)                     | 1 Colour    | 200mm wide x 100mm high |
| B | Embroidery (EM-CLOTHING)              | N/A         | 200mm wide x 200mm high |
| B | Laser Engraving (LG)                  | N/A         | 200mm wide x 200mm high |
| B | Digital Transfer Clothing A6 (DTC-A6) | Full Colour | 148mm wide x 105mm high |
| B | Digital Transfer Clothing A5 (DTC-A5) | Full Colour | 210mm wide x 148mm high |
| B | Digital Transfer Clothing A4 (DTC-A4) | Full Colour | 240mm wide x 200mm high |
| B | Silicone (STP-A)                      | N/A         | 30mm wide x 30mm high   |
| B | Silicone (STP-B)                      | N/A         | 50mm wide x 50mm high   |
| B | Silicone (STP-C)                      | N/A         | 80mm wide x 80mm high   |
| B | Silicone (STP-D)                      | N/A         | 120mm wide x 40mm high  |

|   |                                       |             |                        |
|---|---------------------------------------|-------------|------------------------|
| C | Embroidery (EM-CLOTHING)              | N/A         | 80mm wide x 60mm high  |
| C | Laser Engraving (LG)                  | N/A         | 100mm wide x 60mm high |
| C | Digital Transfer Clothing A6 (DTC-A6) | Full Colour | 80mm wide x 80mm high  |